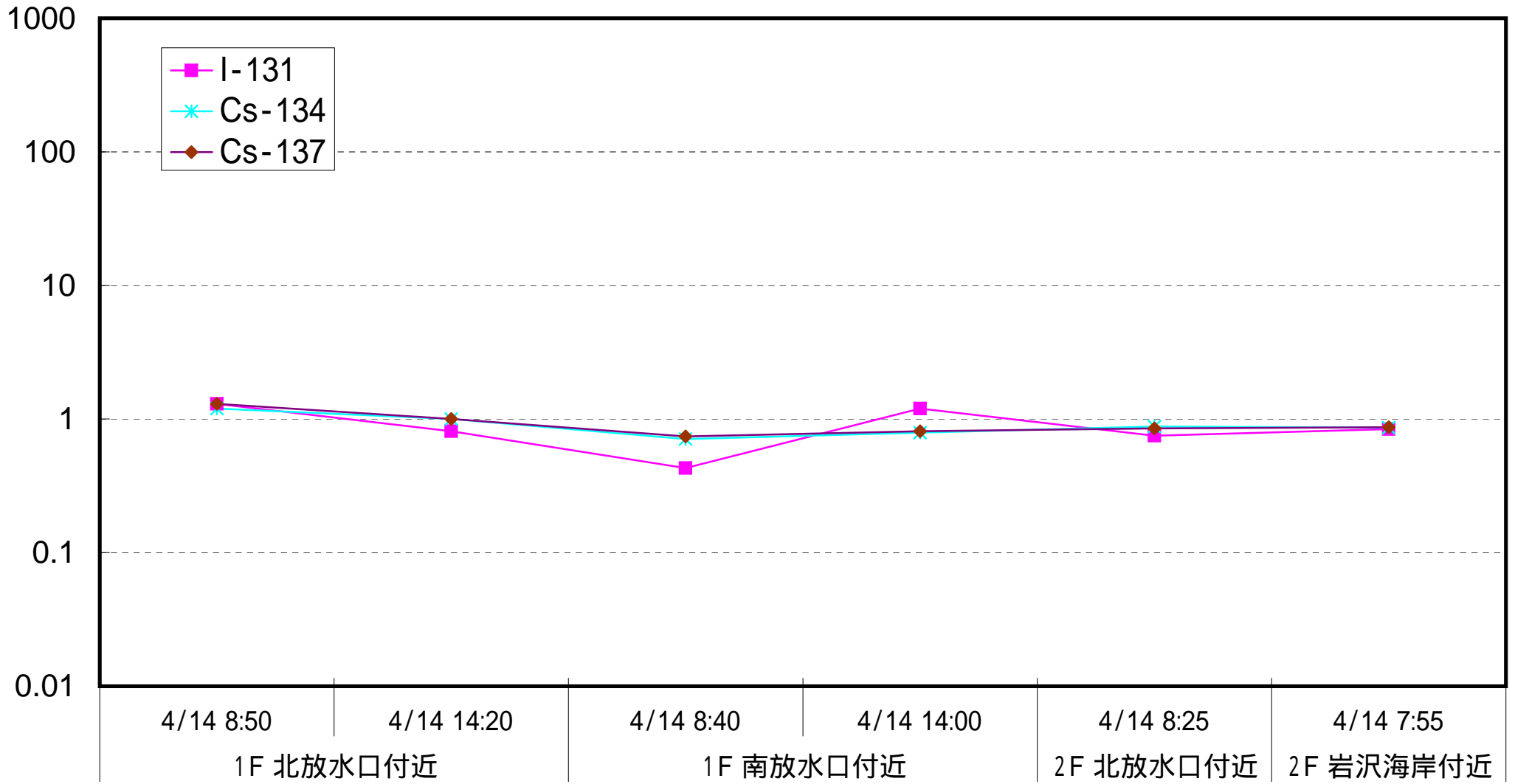
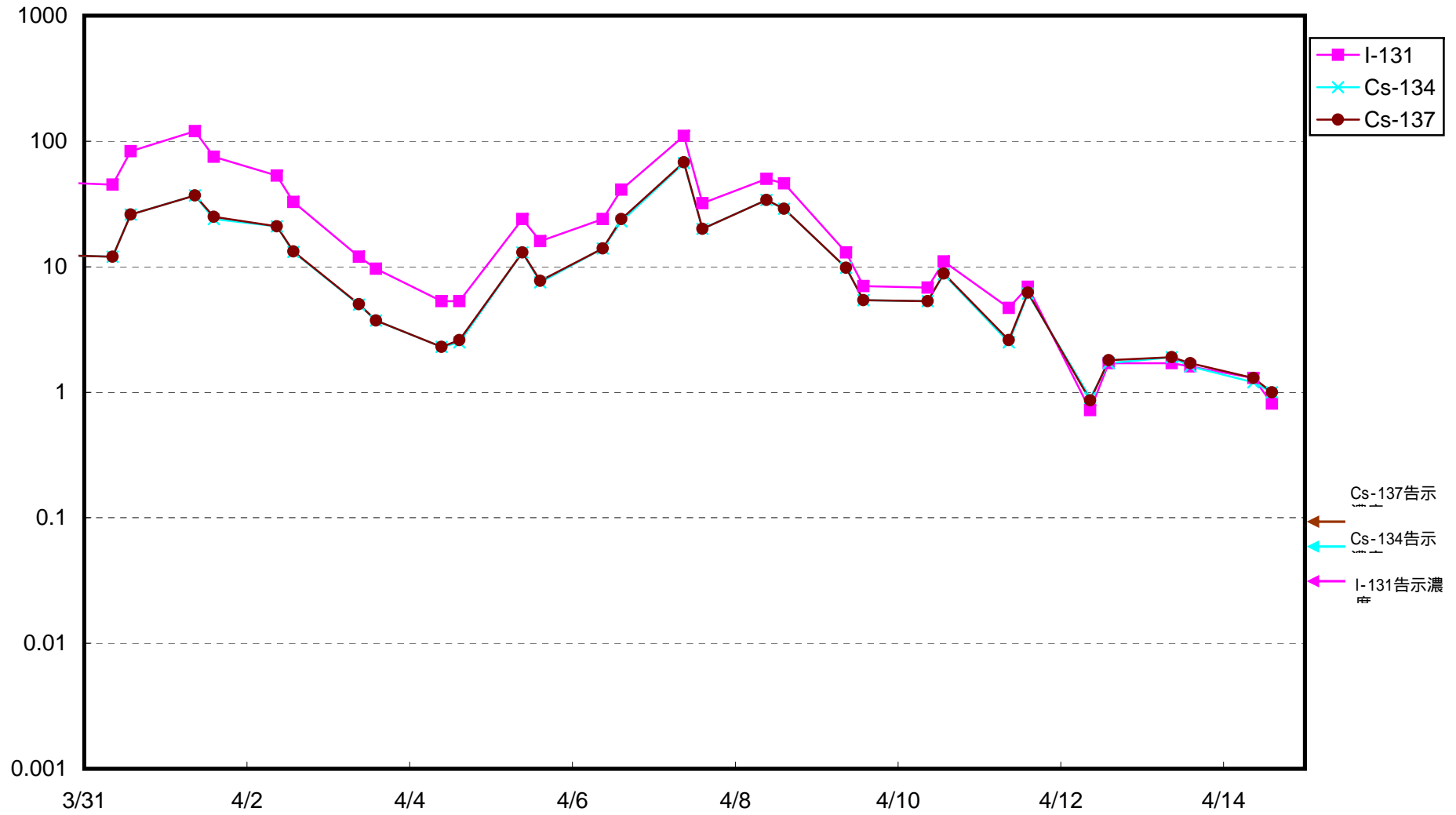


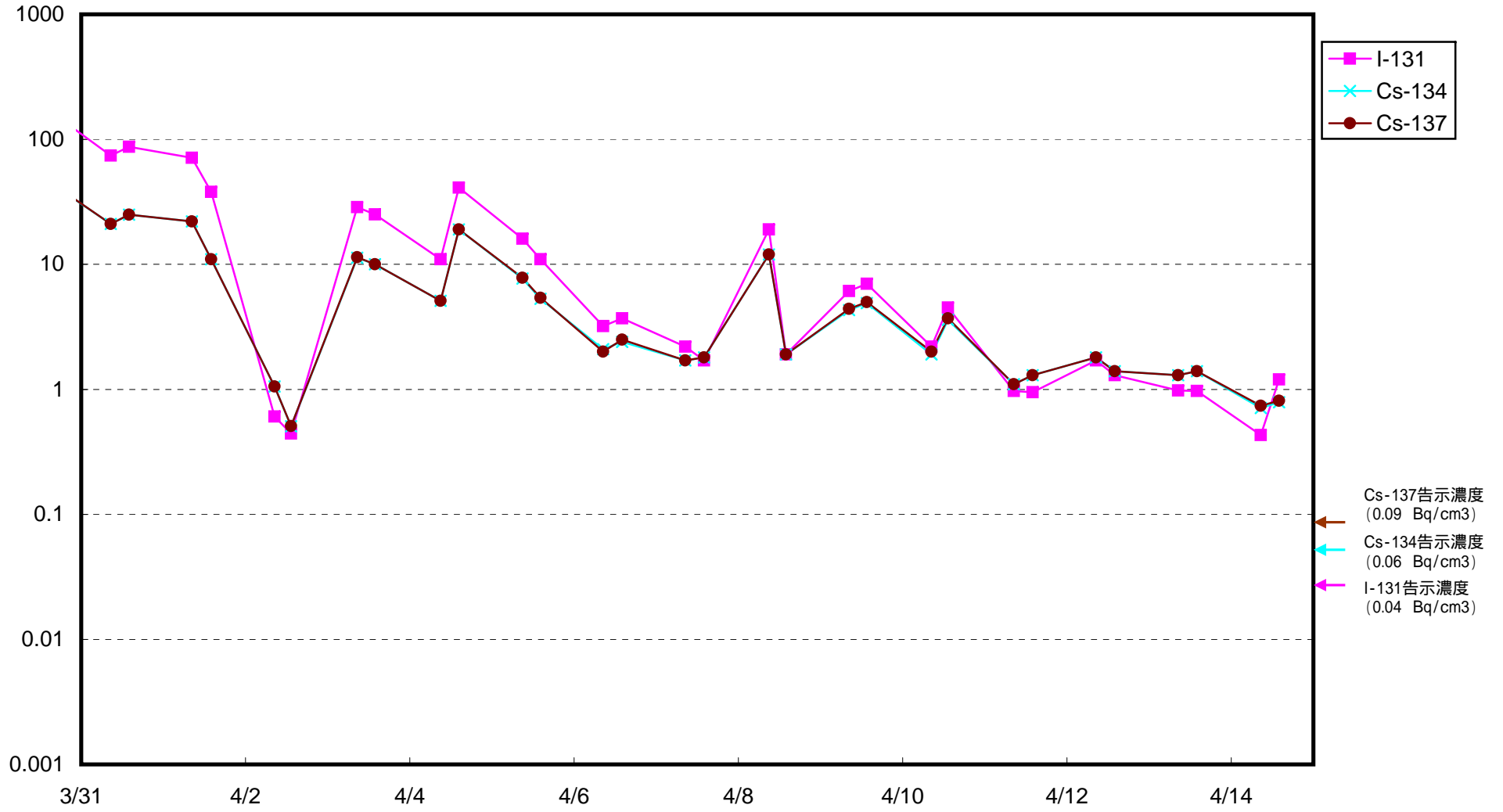
# 海水放射能濃度 (Bq / cm<sup>3</sup>)



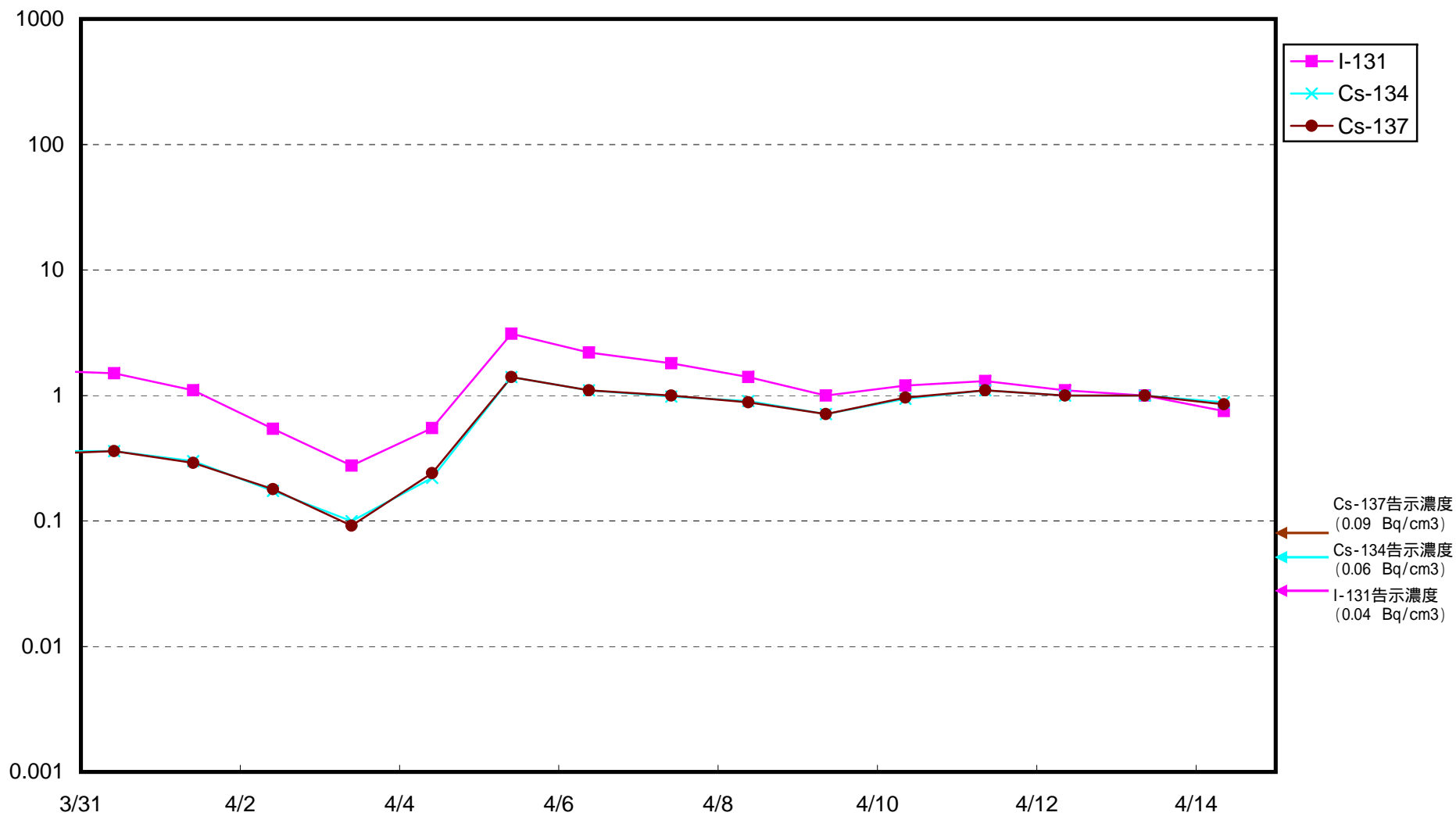
1F 5~6放水口北側(5~6u放水口から北側に約30m地点)放射能濃度(Bq/cm<sup>3</sup>)



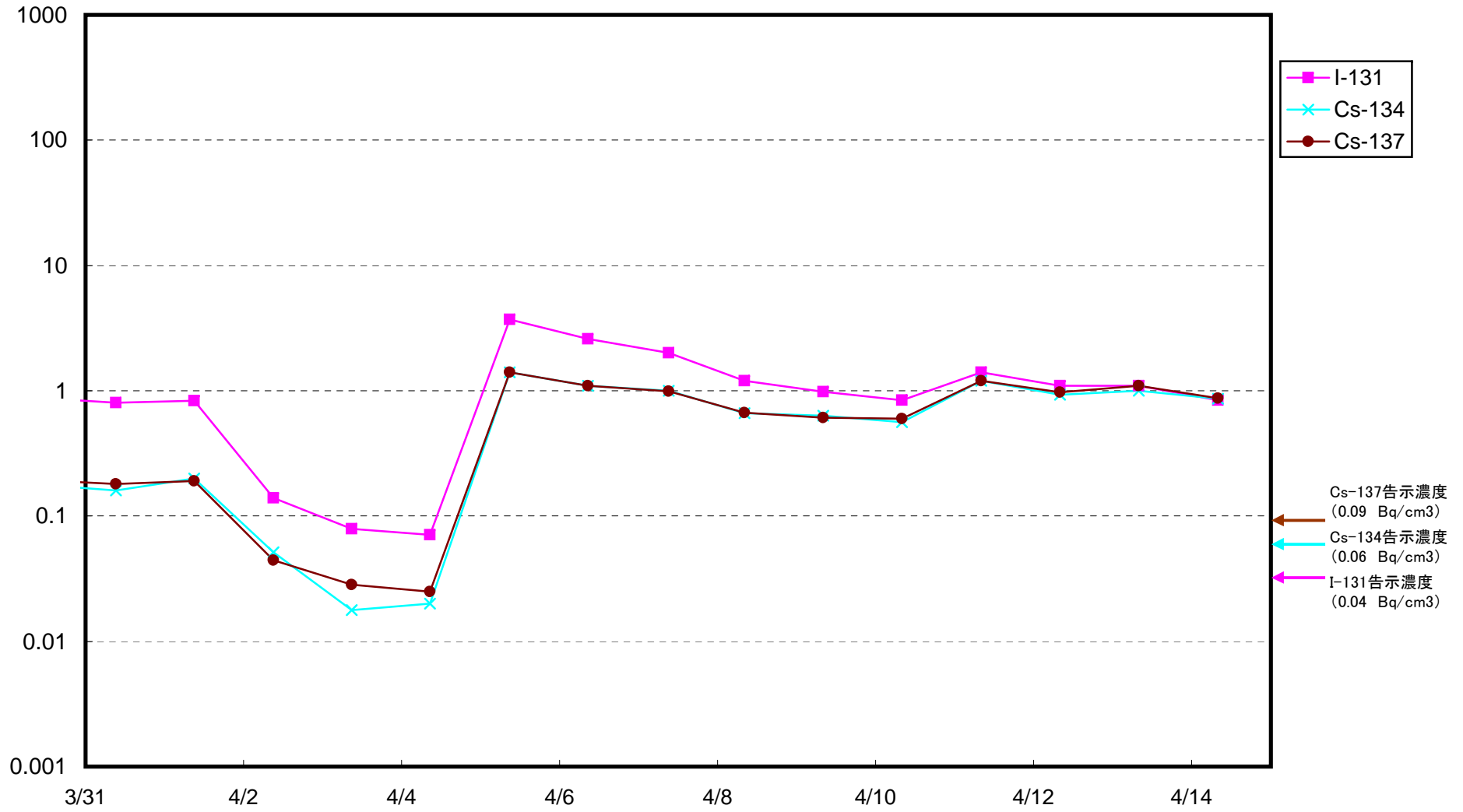
1F南放水口付近 海水放射能濃度 (Bq / cm<sup>3</sup>)



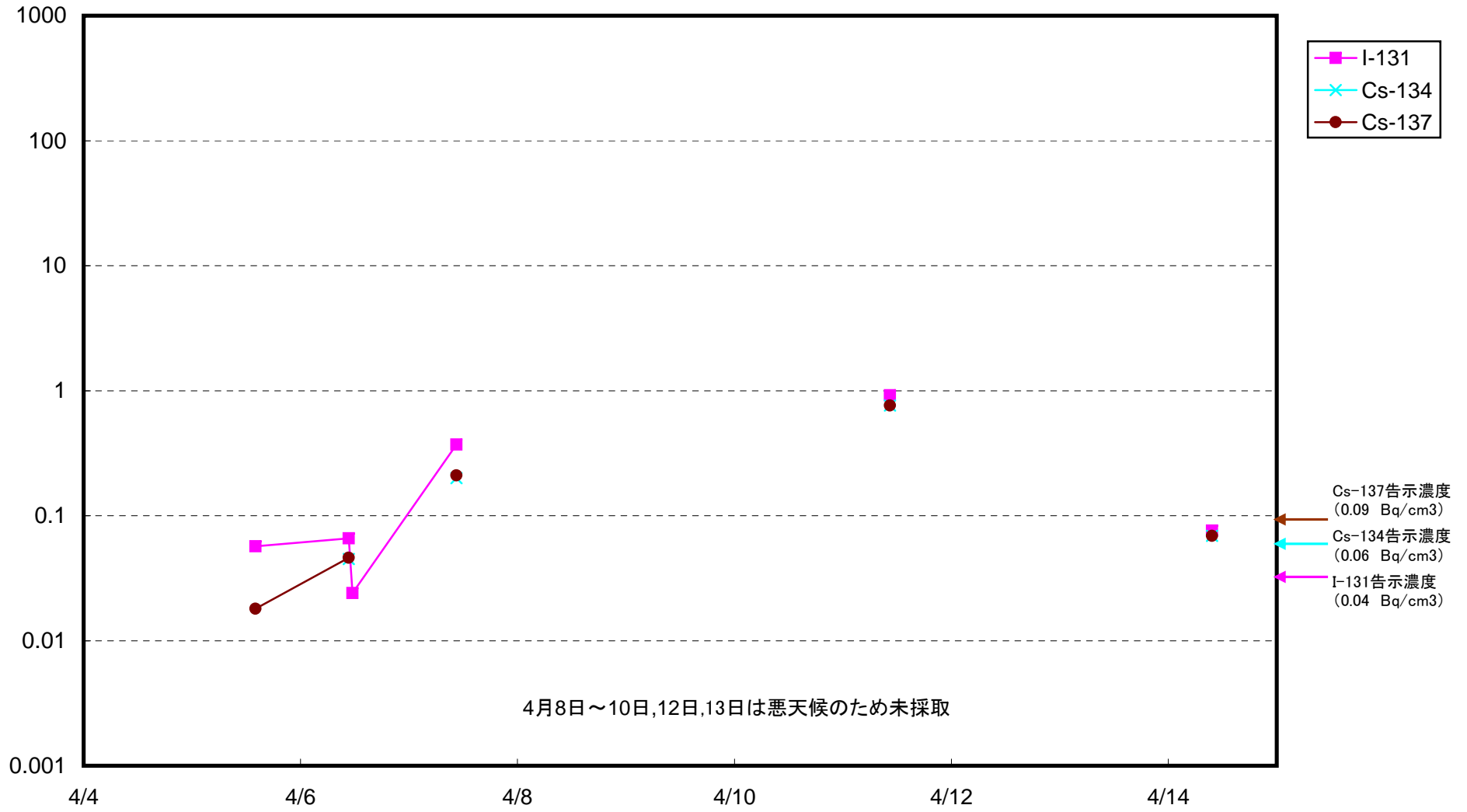
2F北側放水口付近 海水放射能濃度 (Bq / cm<sup>3</sup>)



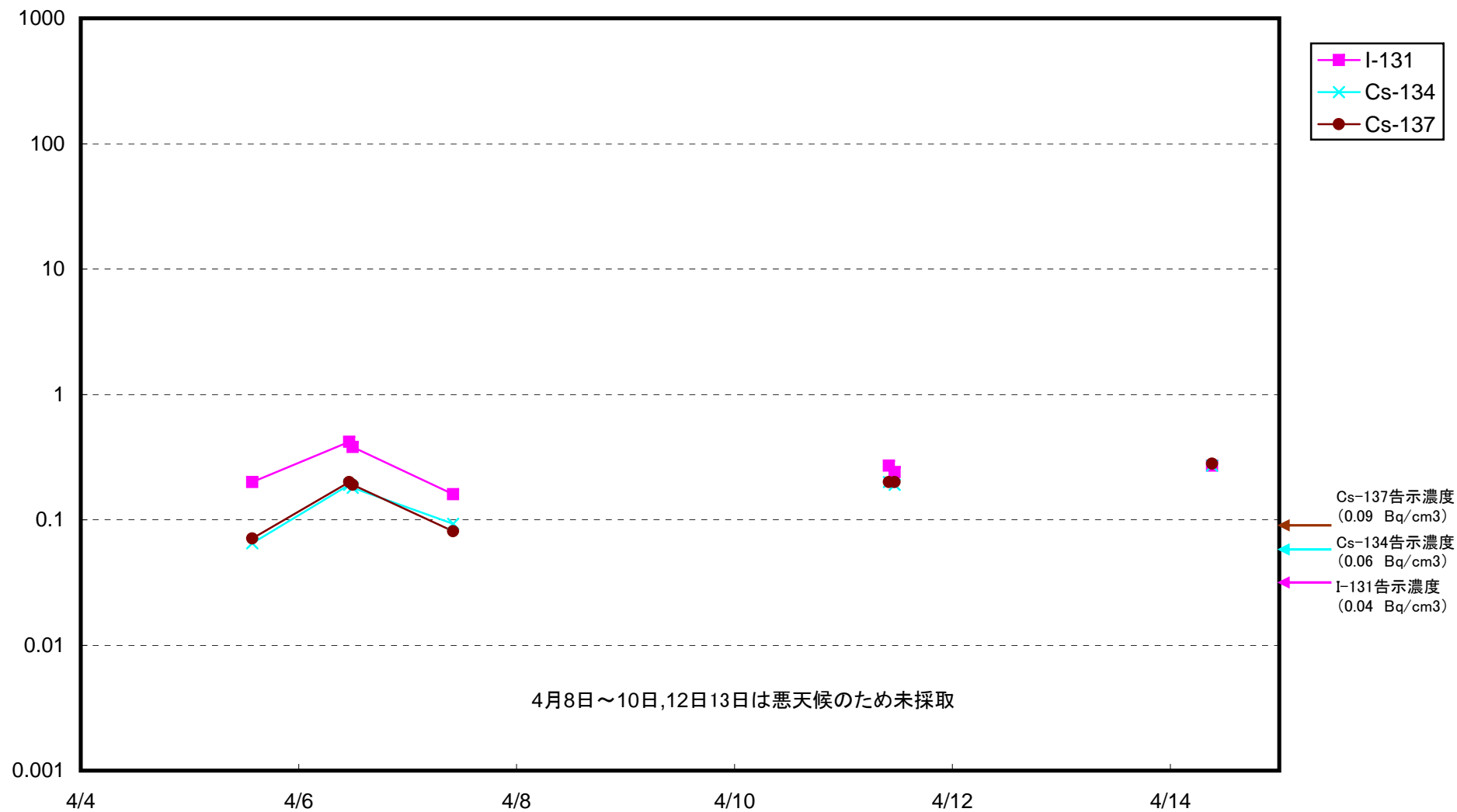
2F岩沢海岸付近 海水放射能濃度(Bq/cm<sup>3</sup>)



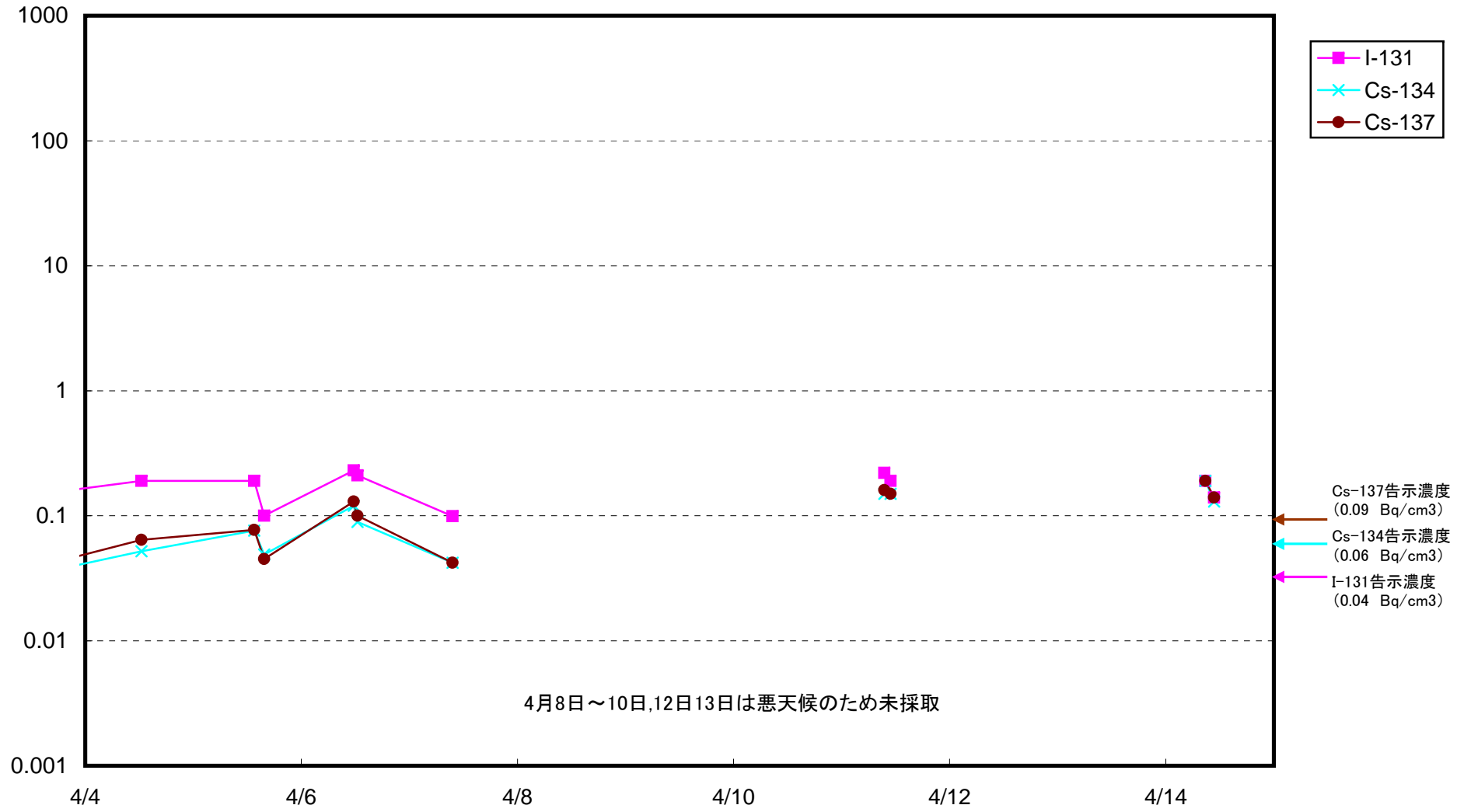
南相馬市沖合約15km付近 海水放射能濃度 (Bq/cm<sup>3</sup>)



請戸川沖合約15km付近 海水放射能濃度(Bq/cm<sup>3</sup>)

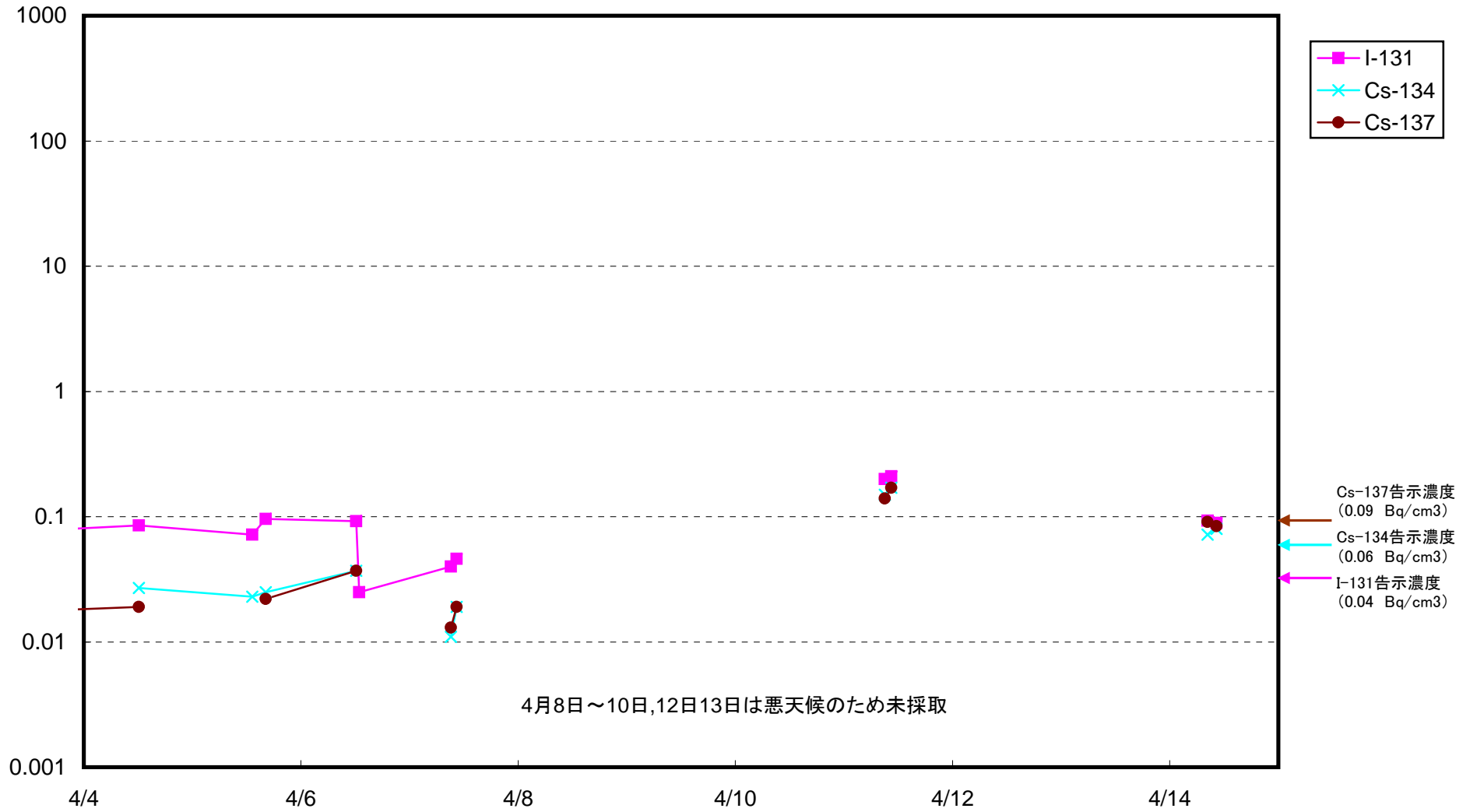


1F敷地沖合約15km付近 海水放射能濃度(Bq/cm<sup>3</sup>)

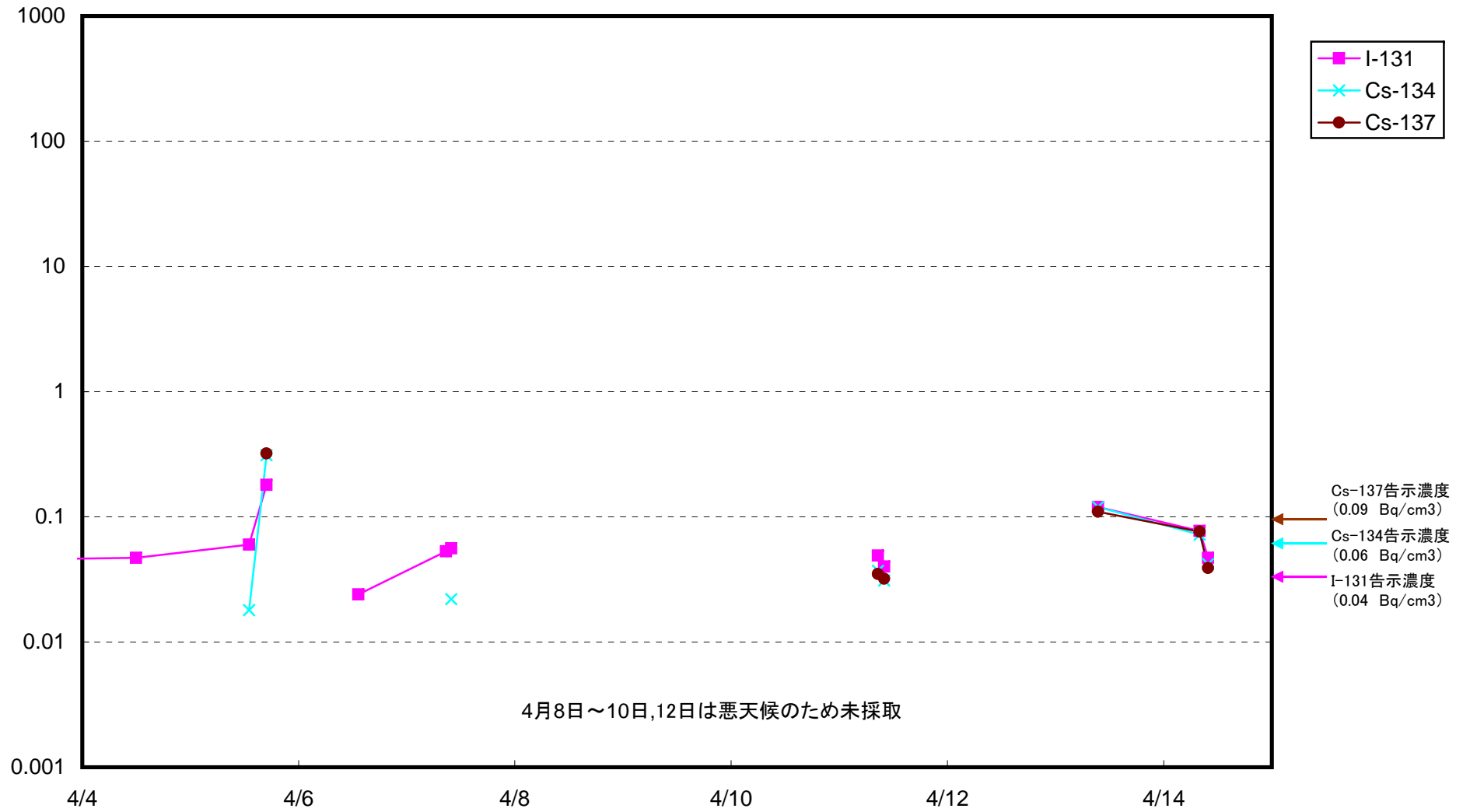




2F敷地沖合約15km付近 海水放射能濃度(Bq/cm<sup>3</sup>)



岩沢海岸沖合約15km付近 海水放射能濃度 (Bq/cm<sup>3</sup>)



広野町沖合約15km付近 海水放射能濃度(Bq/cm<sup>3</sup>)

