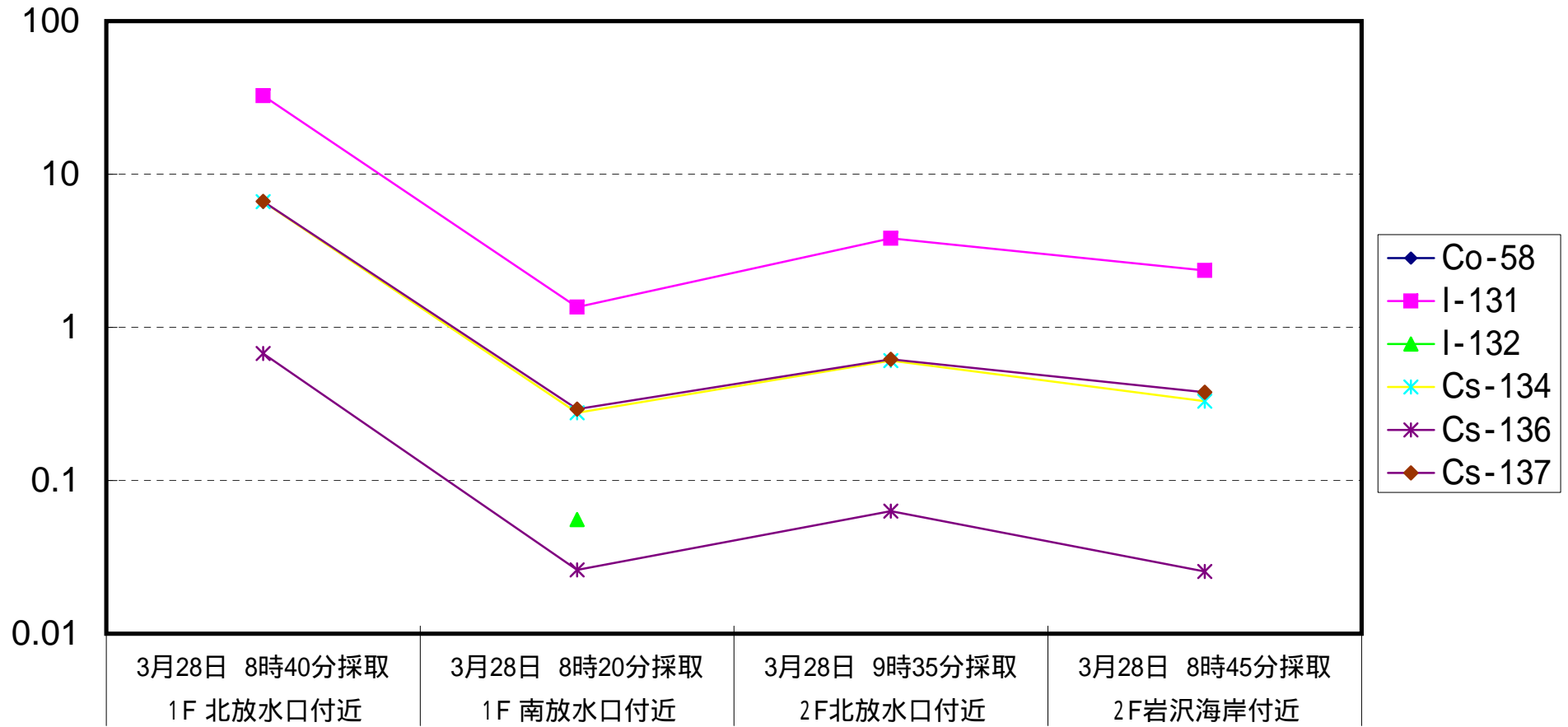
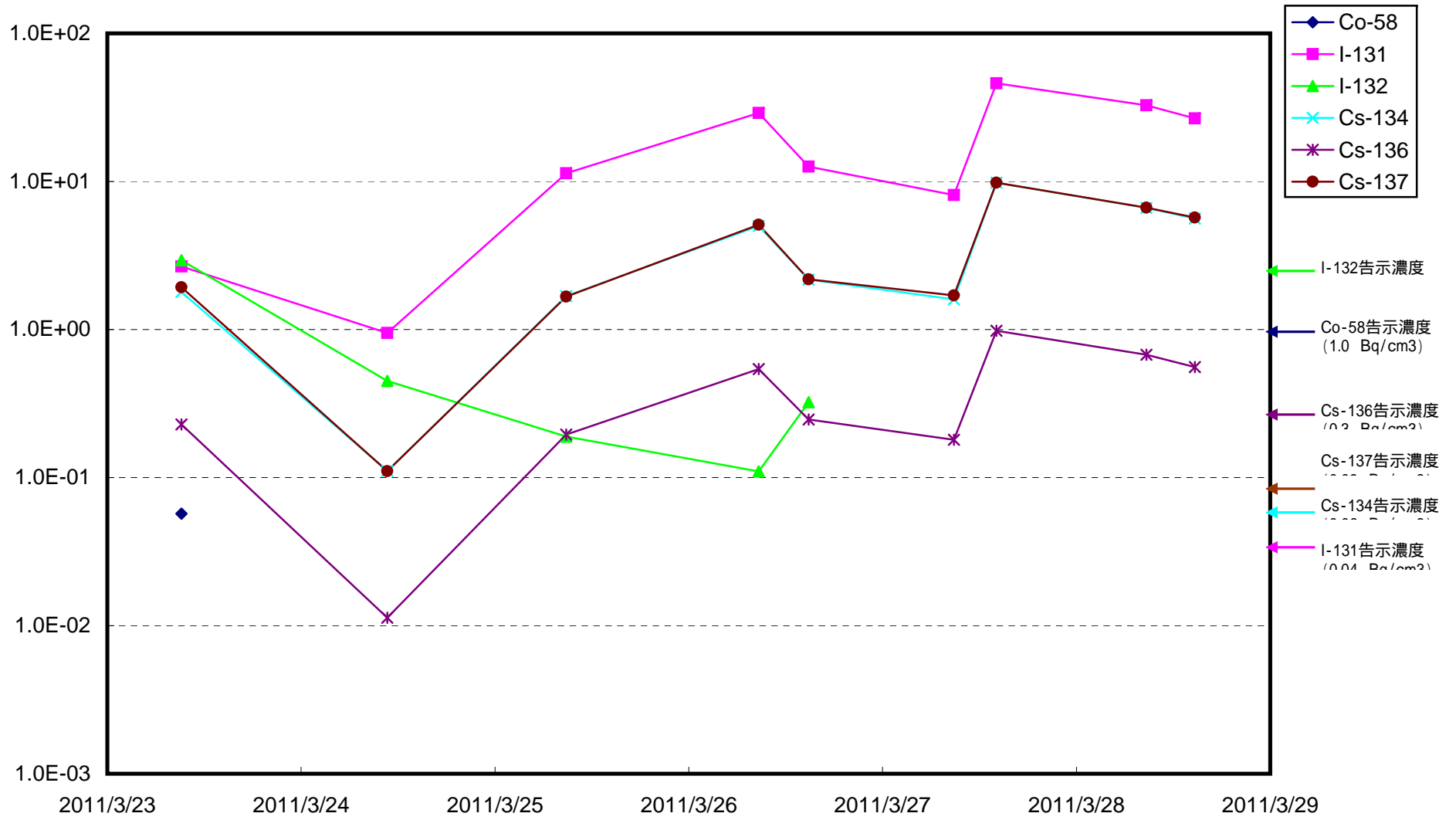


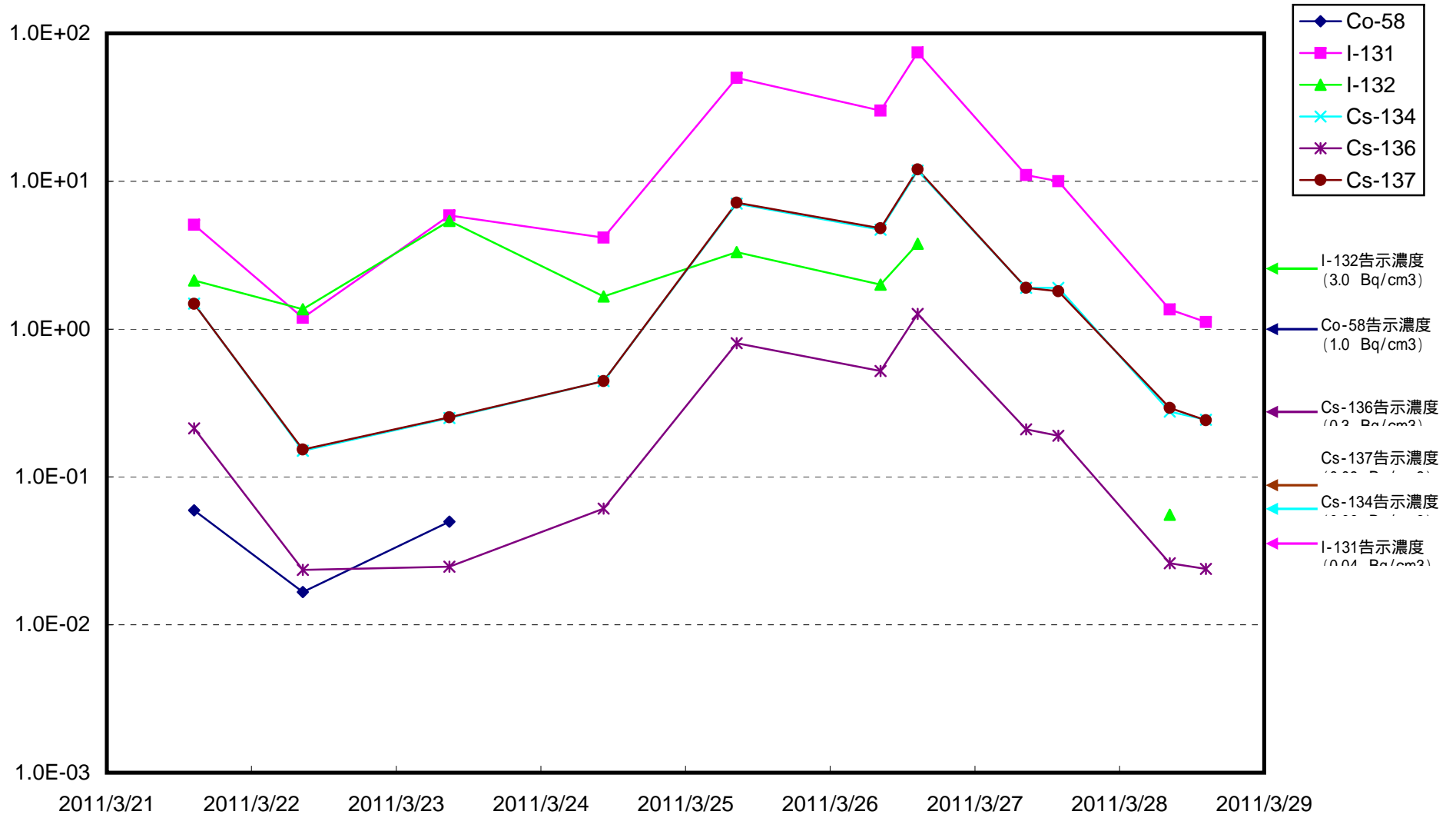
海水放射能濃度 (Bq / cm<sup>3</sup>)



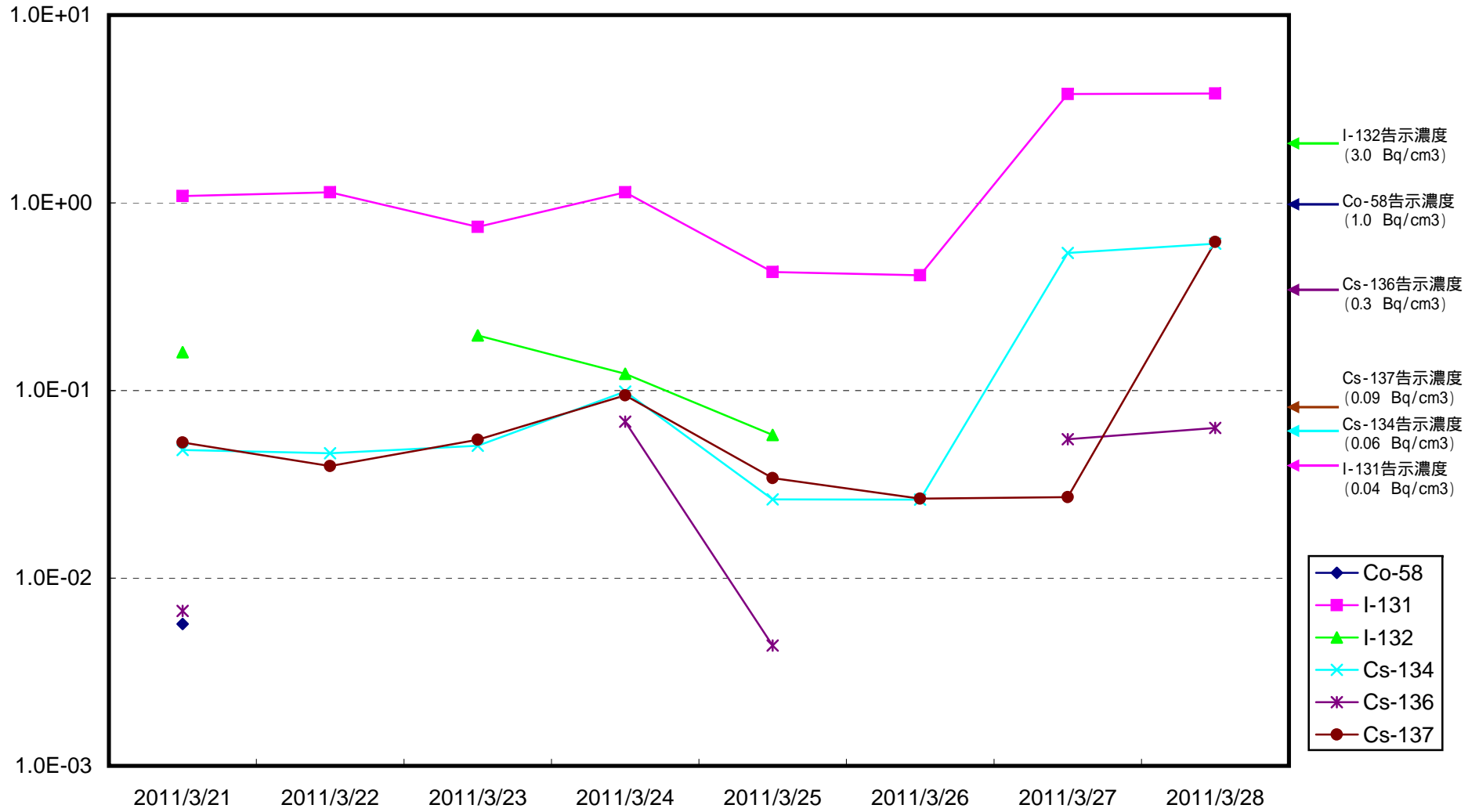
1F 5～6放水口北側(5～6u放水口から北側に約30m地点)放射能濃度 (Bq / cm<sup>3</sup>)



1F南放水口付近 海水放射能濃度 (Bq / cm<sup>3</sup>)



2F北側放水口付近 海水放射能濃度 (Bq / cm<sup>3</sup>)



2F岩沢海岸付近 海水放射能濃度 (Bq / cm<sup>3</sup>)

